



JAN SHAKTI  
GROUP

# JAN SHAKTI GROUP

[www.janshaktigroup.com](http://www.janshaktigroup.com)

Life Goal Ideas To Start Building Your Future Today! Learn How To Effectively Plan Your Goals And Begin Your Journey Toward Success.





# JAN SHAKTI GROUP

## Mission , Vision & Goal

- ◆ Making every Indian citizen self-reliant by learning network marketing and making them financially strong, as well as helping the poor through charity programs
- ◆ Our vision is that we will provide all kinds of digital jobs to our customers and develop them in the digital world. We will bring many types of digital platforms in future like education, gaming, traveling etc.
- ◆ life goal ideas to start building your future today! Learn how to effectively plan your goals and begin your journey toward success.





OUR JOINING

PACKAGE

₹ 1200/-

◆ Growth Even If The  
Upline Works

◆ Growth Even If  
Downline Works

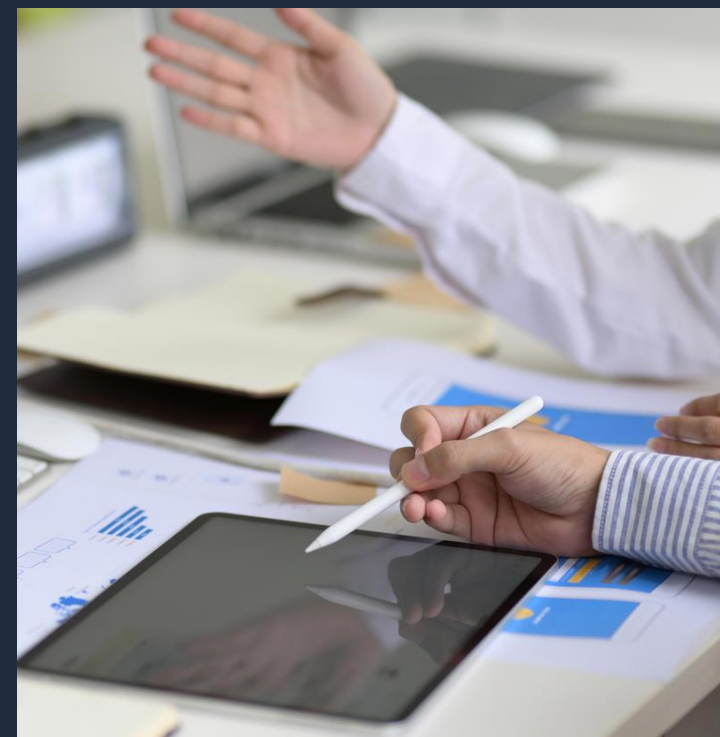
◆ Growth Even If  
Crosline Works



Website : [www.janshaktigroup.com](http://www.janshaktigroup.com)



# TYPES OF INCOME



*Company Have 7 Types Of Income*

1. Direct Income
2. Instant + Monthly Global Team Renewal Income
3. Weekly Royalty Income
4. Awards & Rewards
5. One Time Family Security Income
6. Kanyadaan Income
7. Education Income



66

# Direct Income



₹ 500/-

Direct Income





# Instant Income

Level	Team	Income	Monthly
1	2	₹ 20	40
2	4	₹ 20	80
3	8	₹ 20	160
4	16	₹ 20	320
5	32	₹ 20	640
6	64	₹ 15	960
7	128	₹ 15	2730
8	256	₹ 15	3840
9	512	₹ 15	7680
10	1024	₹ 15	15360

Level	Team	Income	Monthly
11	2048	₹ 10	20480
12	4096	₹ 10	40960
13	8192	₹ 10	81920
14	16384	₹ 10	163840
15	32768	₹ 10	327680
16	65536	₹ 5	327680
17	131072	₹ 5	655360
18	262144	₹ 5	1310720
19	524288	₹ 5	2621440
20	1048576	₹ 5	5242880



# Monthly Renewal Package

₹ 600/-

Monthly Renewal  
Deduct From Your  
Income Wallet



Website : [www.janshaktigroup.com](http://www.janshaktigroup.com)



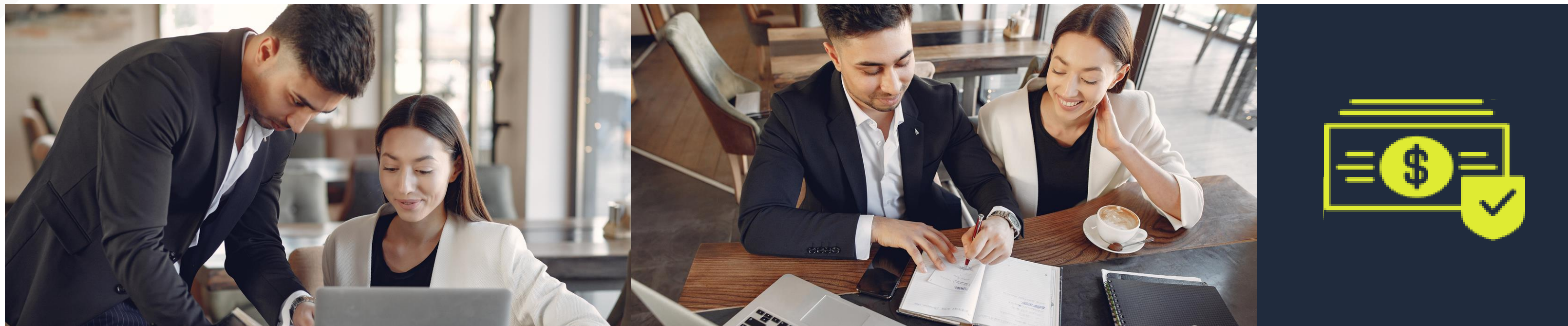
# Monthly Renewal Income

Level	Team	Income	Monthly	Total Month
1	2	₹ 20	40	40
2	4	₹ 20	80	120
3	8	₹ 20	160	280
4	16	₹ 20	320	600
5	32	₹ 20	640	1240
6	64	₹ 15	960	2200
7	128	₹ 15	2730	4930
8	256	₹ 15	3840	8770
9	512	₹ 15	7680	16450
10	1024	₹ 15	15360	31810

Level	Team	Income	Monthly	Total Month
11	2048	₹ 10	20480	52290
12	4096	₹ 10	40960	92550
13	8192	₹ 10	81920	173840
14	16384	₹ 10	163840	337680
15	32768	₹ 10	327680	665360
16	65536	₹ 5	327680	993040
17	131072	₹ 5	655360	1648400
18	262144	₹ 5	1310720	2959120
19	524288	₹ 5	2621440	5580560
20	1048576	₹ 5	5242880	10823440



# Weekly Royalty Income



**Royalty 1**

25 Personal Directs  
**1% Weekly Income**

**Royalty 3**

75 Personal Directs  
**3% Weekly Income**

**Royalty 2**

50 Personal Directs  
**2% Weekly Income**

**Royalty 4**

100 Personal Directs  
**4% Weekly Income**

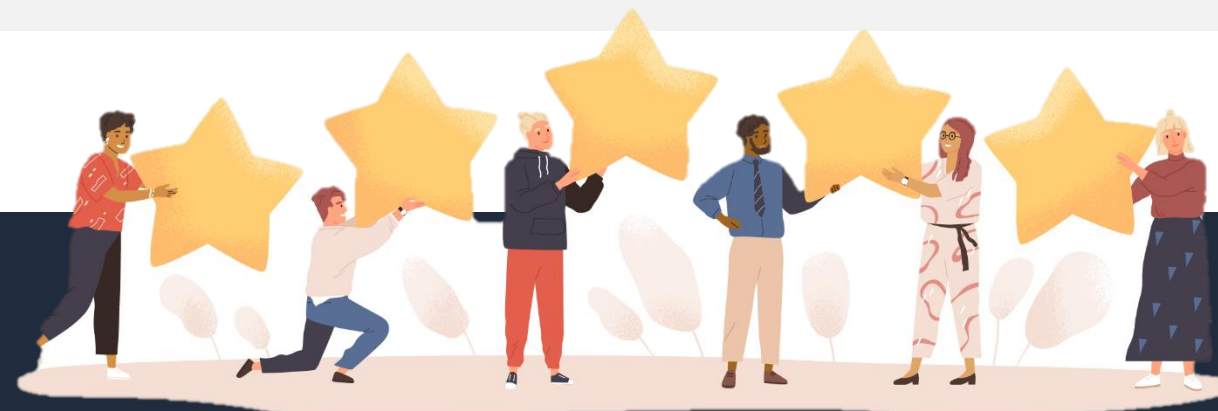




# Award & Reward



1. **5<sup>TH</sup> LEVEL COMPLETE** : **DIGITAL SMART WATCH**
2. **10<sup>TH</sup> LEVEL COMPLETE** : **LAPTOP**
3. **12<sup>TH</sup> LEVEL COMPLETE** : **IPHONE 14 PRO**
4. **14<sup>TH</sup> LEVEL COMPLETE** : **KTM BIKE**
5. **16<sup>TH</sup> LEVEL COMPLETE** : **TATA HARRIER CAR**
6. **18<sup>TH</sup> LEVEL COMPLETE** : **AUDI A3 CAR**
7. **20<sup>TH</sup> LEVEL COMPLETE** : **1 CAROR HOUSE ANY CITY**





# Family Security Income



**₹ 5000 TO ₹ 50 LAKH INCOME**



**The Partner Working In Our System Does Not Live Among Us, Then 100 ₹ Cooperation Amount Will Be Deducted From Our Community And Will Be Given To The Family Members Of That Partner.**



**Example If There Are 1000 Communities**  
**1000x100 = 1 Lakh Will Go To His House**

**Anything Can Happen Next**





# Kanyadaan Income

**₹ 1100/- To ₹151000/-  
Kanyadaan Income**

WHICH WILL BE GIVEN  
ACCORDING TO COMMUNITY

There is a team of 1000,  
₹ 10/- will be deducted monthly  
from the entire team and will be  
given to the daughter.

**Example :- 1000 Team × ₹ 10/- Income  
= ₹ 10000/- Total Kanyadaan Income**





# Education Income

**₹ 200/- To ₹10000/-  
Monthly Income**



WHICH WILL BE GIVEN  
ACCORDING TO COMMUNITY

There is a team of 1000,  
₹ 1/- will be deducted monthly from  
the entire team and whoever  
achieves will get it monthly.

**Example :- 1000 Team × ₹ 1/- Income  
= ₹ 1000/- Total Monthly Income**





# Terms And Conditions

- **Free Registration**
- **ID Activation 1200/-**
- **Withdrawal Time :- 7:00 PM To 10:00 PM**
- **Credit Time :- 7:00 AM To 3:00 PM**
- **Minimum Withdrawal 100/-**
- **E-Pin Purchase 10%**
- **Bank Withdrawal 15%**
- **Nominee Facilities Available**
- **Post Will Not Have To Be Deleted In 30 Days**
- **You Qualify For Family Security Income By Making 15 Directs In Any One Month.**
- **5 Directs Compulsory for Kanyadaan Income.**
- **10 Directs Compulsory for Education Income.**







Website : [www.janshaktigroup.com](http://www.janshaktigroup.com)

Email : [hello@janshaktigroup.com](mailto:hello@janshaktigroup.com)

# THANK'S FOR WATCHING

